

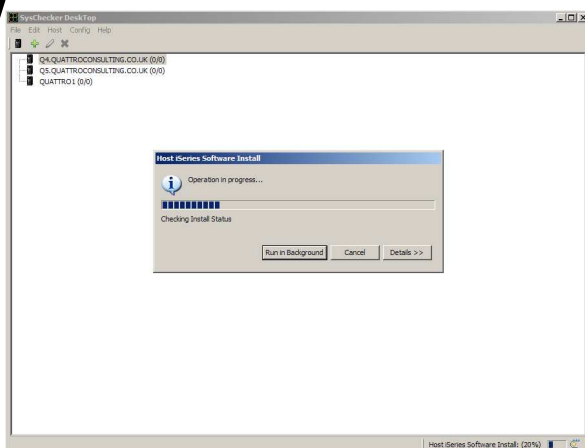


SysChecker

The Pro-Active System Monitor

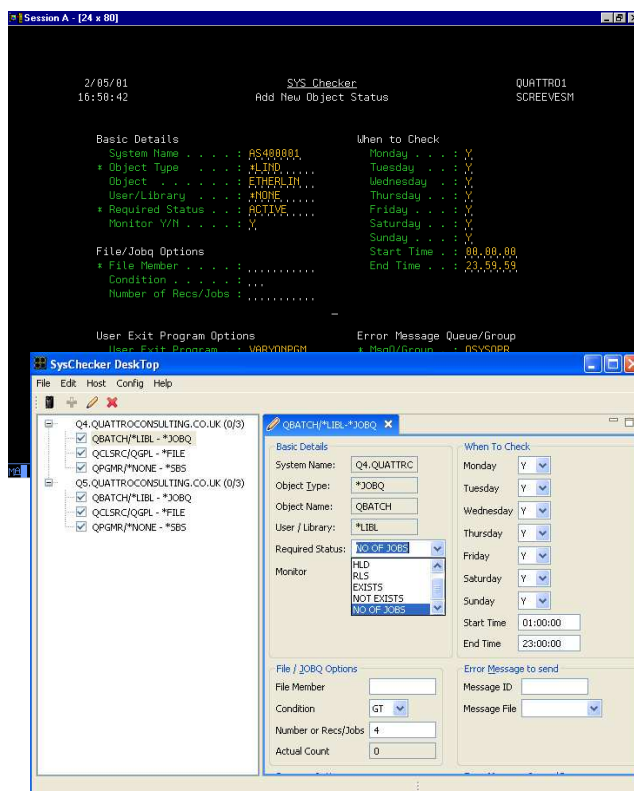
Simple Installation

Installation of the entire product can all be performed from the client in minutes.



Simple Configuration

To set up the objects and functions that you want to check takes seconds, either by traditional green screen or by PC based GUI.



Operational 'Errors'

Traditional monitoring tools can not detect errors that create no messages ... in contrast SysChecker can monitor for ..

- Programs Looping
- Distribution Queues 'sticking'
- Jobs stuck in LCKW or other states
- Interfaces files are not created or changed
- Scheduler jobs are held
- Network files fail to arrive on time
- Subsystems are not started
- Jobs queued behind long running or held jobs
- Files containing no, or even to many records etc

Reporting

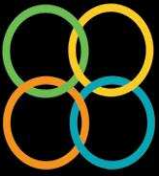
When SysChecker finds one of your system components in an incorrect state, it will do one of the following, depending upon how you have it configured:-

- ✦ Send a group of configured users a message
- ✦ Send a group or single e-mail to configured users
- ✦ Call a specified program to try and correct the condition

Quattro Software Limited

101 Lockhurst Lane, Coventry, CV6 5SF

Directors: Mark Reeves, David Sefton Registered in England: 3438552 VAT Registration: 695 0113 40

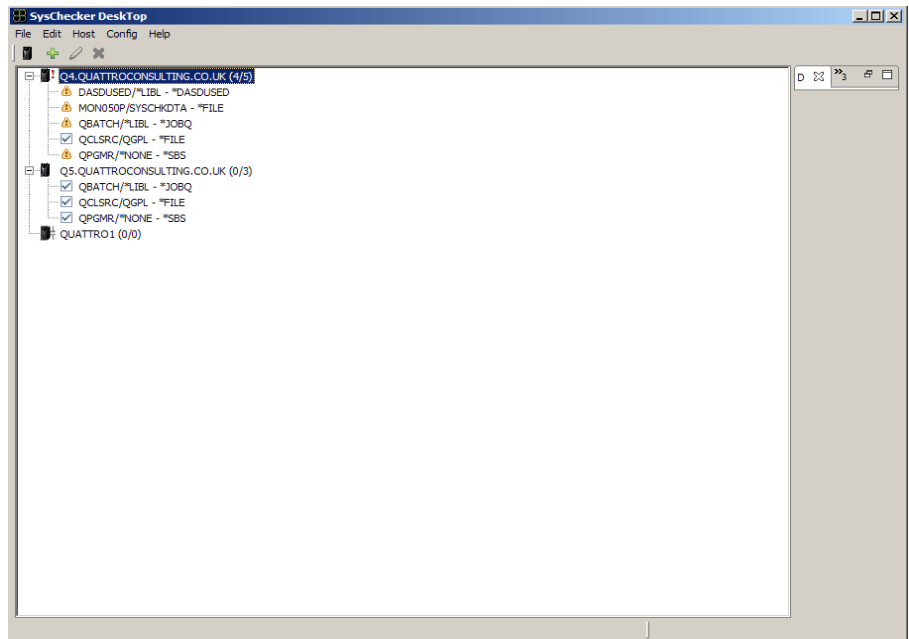


SysChecker

The Pro-Active System Monitor

Multiple Systems from one Monitor

The new SysChecker Desktop allows you to configure and monitor multiple iSeries from one place. If any object on any system goes into error, the Desktop will immediately highlight the relevant system in red, and allow you to drill down to check the specific error



Simply Visual

One look at the monitor screen can tell you the operational status of you machine in seconds.

Ideal for post IPL checking, and giving non iSeries staff the ability to confirm the system is fine without any requiring knowledge of commands or programs.



Contact

If you have a specific operational problem that you would like to discuss, or simply would like more information or demonstration of SysChecker, Please contact us on 07071 700 400 or information@syschecker.co.uk